

A STORM BECKONS.

One of the only things that can bring a skier in an epic day on the mountain is painful feet.

First Degree boots make ultra comfortable, high-performance alpine boots designed to bring the feeling back to skiing.

With an easy to enter, 3 piece shell, 5 forward lean options to suite the skiers style, combined with an after-market liner and insole, this boot is ready to take on any storm, right out of the box.

A walk mode enables the skier to navigate the ascent with comfort and control, ready to tackle your next line with the flip of a switch.

So, whether skiing, skinning, bootpacking or aprèsing, First Degree Boots has your feet covered.

A storms’ a comin – are you ready?

DISTRIBUTION

AUSTRIA HEADQUARTER
Dee Luxe Sportartikel Handels GmbH
Europastrasse 8/1
6322 Kirchbichl
Austria
T: +43 5332 930 81
F: +43 5332 930 200
info@deeluxe.com
www.firstdegreeboots.com

USA
Global Sales Guys
621 Kalamath Street
Denver, CO 80204
T: +1 970 736 0238
M:+1 970 977 7779
martyt@globalsalesguys.com
www.firstdegreeboots.com

SPANIEN
kitsune.ws
Guillem García García
C/ Canigó 5, Urb el Pla
25721 Prats i Sansor, Lleida
M: + 34 636 870 066
guillemgarcia@kitsune.ws

GRIECHENLAND
BESTBOARDS - SKLATINIOTI O.E.
17, Kountouriotou Str
15127 Melissa
Athens – Hellas
T: + 30 210 282 548 1
F: + 30 210 282 585 1
www.bestboards.gr
tom@bestboards.gr

SWITZERLAND
Sideshore AG
Zinkereistr . 35
CH-8633 Wolfhausen
Switzerland
T: +41 55 263 20 77
F: +41 55 263 20 79
pascalkurz@sideshore.ch
www.sideshore.ch

FRANCE
Dee Luxe Sportartikel Handels GmbH
Europastrasse 8/1
6322 Kirchbichl
Austria
T: +43 5332 930 81
F: +43 5332 930 200
info@deeluxe.com

FIRSTDEGREEBOOTS.COM



1°

FIRST DEGREE

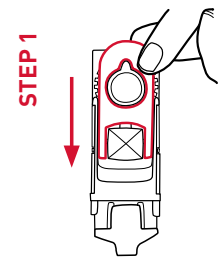
B O O T S

P R E M I U M M O U N T A I N T E C H _

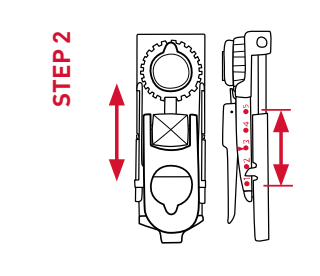
WALK MECHANISM
N°1

5-STEP FORWARD LEAN MECHANISM

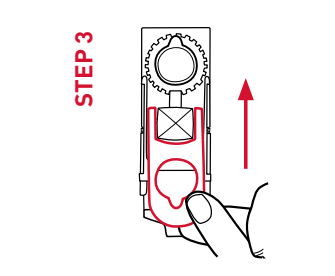
This mechanism provides the maximum of comfort and adjustment possibilities. Five forward lean positions are easily adjustable, additionally there is a walk mode. See the diagrams below:



Unlock the system by pulling down the mechanism.



Now the top part of the shell moves independently from the lower part. You are now in walk mode.



Just before riding, adjust your forward lean angle by choosing one position among the five available. Lock it by lifting up the mechanism.

VIBRAM OUTSOLE
N°2

VIBRAM SOLE (DIN COMPATIBLE)

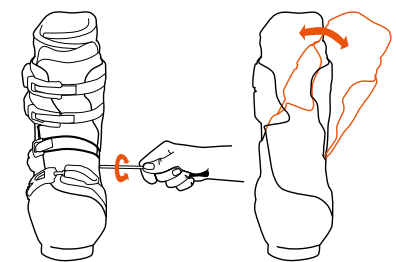
Replacable Vibram-Sole offers perfect grip on and off piste.



BOOSTER
N°3



LATERAL CANTING
N°4



With the help of the screwed lateral canting, you can adjust the lateral angle of the top part of the shell. Unscrew the lateral canting and choose the angle wanted.

TONGUE
N°5

CUSTOM TONGUES

Tongues are available in different colour and hardness.



LINER TECHNOLOGY
N°6

LINER TECHNOLOGY

There are different liner options to choose for preorder. The two different thermo mouldable liner can be molded 100% to your feet. The Performance flex liner offers perfect out of the box fit.



HB THERMO FLEX LINER

- 100% thermo mouldable liner
- Precision Fit pad ready



HB THERMO LINER DEL 141

- 100% thermo mouldable liner
- Precision Fit pad ready
- Crafted in Europe



HB PERFORMANCE FLEX LINER 2.0

- Precision Fit pad ready
- Highback and tongue reinforcement for perfect support and performance



HB PERFORMANCE LINER

- Extra comfort padding on collar and tongue
- Flexible toebox

SHELL FEATURE
N°7



RACE INSOLE 3°

The heel wedge lifts your heel and ensures an optimal fitting of your ankle in the boot shell. The higher positioning of your heel will help you to have a more centered stance over your bindings and ski.

ST1



ST1 BOOT FEATURES

- Flex: 100
- Classic 3 Piece Shell
- Walke Mode Capability
- 5 step forward lean mechanism
- micro adjustable buckles
- Last: 99 mm
- Weight 4.45 lbs / 2,1kg in size 27 Mondo
- 50 mm BOOSTER Strap
- additional stiffer tongues
- 3 buckle construction
- Vibram outsole (DIN compatible)

LINERS

HB Thermo Liner DEL 141

HB Performance Liner

SIZES

24.0 - 29.5 (Half Sizes Included)

The Stormtrooper ST1 boots are fully functional freestyle sidecountry alpine boots geared for skiers looking for high performance and comfort. With a classic 3-piece shell design, 3 heavy duty buckles, and walk mode capability, this boot will serve both in and out of bounds skiers looking for every terrain. The walk mode buckle enables full ankle flexing, which is crucial for walking to and from the lifts, or hiking along ridges. Plus, there are 5 forward lean options to suit any skier in any condition.

The ST1 has a medium flex of 100.

ST1 100 TF	511500-1000/9140	white	24.0 - 29.0
------------	------------------	-------	-------------

ST1 100	511501-1000/9140	white	24.0 - 29.5
---------	------------------	-------	-------------

ST2



ST2 BOOT FEATURES

- Flex: 120
- Classic 3 Piece Shell
- Walke Mode Capability
- 5 step forward lean mechanism
- micro adjustable buckles
- Last: 99 mm
- Weight 4.45 lbs / 2,1kg in size 27 Mondo
- additional stiffer tongues
- 4 buckle construction
- Vibram outsole (DIN compatible)

LINERS

HB Thermo Flex Liner

HB Performance Flex Liner 2.0

SIZES

24.0 - 30.5 (Half Sizes Included)

The Stormtrooper ST2 boots are fully functional sidecountry alpine boots geared for skiers looking for high performance and comfort. With a classic 3-piece shell design, 4 heavy duty buckles, and walk mode capability, this boot will serve both in and out of bounds skiers looking for powder. The walk mode buckle enables full ankle flexing, which is crucial for walking to and from the lifts, or hiking along ridges. Plus, there are 5 forward lean options to suit any skier in any condition.

The ST2 has a medium hard flex of 120.

ST2 120 TF	511800-1000/9110	black	24.0 - 30.0
------------	------------------	-------	-------------

ST2 120	511801-1000/9110	black	24.0 - 30.5
---------	------------------	-------	-------------