

WHAT'S NEW

TRUE
KITEBOARDING

NOW BY

DUOTONE



THE TRANSITION

THE ONLY CONSTANT THING IN LIFE IS CHANGE. THE TIMES, THE CONDITIONS, EVERYTHING IS IN MOTION. ONLY THE DESTINATION STAYS THE SAME; LIKE OUR AMBITION TO BUILD THE MOST INNOVATIVE EQUIPMENT FOR WIND AND WATER SPORTS.

As from August 2018, the Boards & More kite and windsurfing divisions will develop and distribute all products under the new name DUOTONE. The complete R&D, distribution, production teams and athletes stay on board. United by passion, we lead as the most influential and desirable brand, defining the standards of our sports. It's a new era that will be built upon our core values of advanced technologies, exceptional quality, unstoppable enthusiasm and continuous improvement. We set the tone.

Wind and water, emotion and technology, man and material, kite and sail. There are always two sides to every story and we bring together what belongs together. Two tonalities and forces, two poles depending on each other, true DUOTONE.

So join us in entering a new era!
We're riding with high hopes under a new flag.
Welcome to DUOTONE!

MEET THE PEOPLE WHO MAKE IT ALL COME TRUE



NIKLAS VALENTIEN



TILL EBERLE



ANTONIO DESTINO



RALF GRÖSEL



JEROME BONIEUX



LAURENT HOMPESCH



LAURA ALEXY



PHILIPP BECKER

The brand is nothing without the people representing the name. All Boards & More personnel that developed and shaped the kitesurfing sport since 2001 stands united behind Duotone.

Duotone is the sum of all people burning for the sport, contributing all their knowledge and skills to the improvement of the best kites and boards. Nobody leaves the shape room, gets off the sewing table or stops testing on the water unless all questions are answered and all wishes are fulfilled.



KEN WINNER



FLORIAN PANTHER



THOMAS KAISER



SKY SOLBACH



JOHANNA EBENHÖH



AURÉLIEN MIERSWA



MARCO MAY



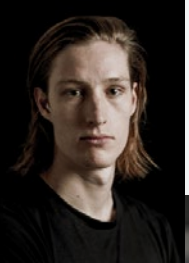
PATRICK DUDEK



MANUEL ZWINZ



SEBASTIAN HERRIG



JULIAN LANGE



AARON HADLOW



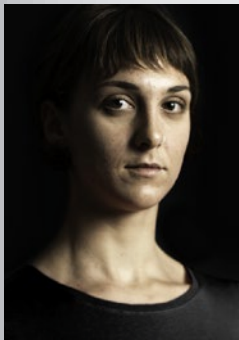
MATCHU LOPES



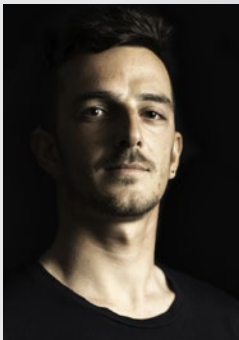
RENO ROMEO



COLLEEN CARROLL



FRANCESCA BAGNOLI



GIANMARIA COCCOLUTO



GIANNI ARRAGNO



HANNAH WHITELEY



JAMES CAREW

ONE
TEAM

ONE
SPIRIT



TOM HEBERT



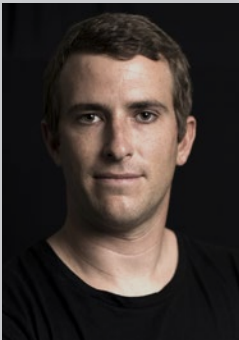
LASSE WALKER



LEWIS CRATHERN



LYDE HECKROOT



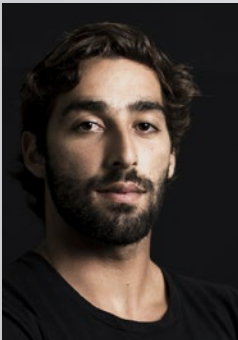
PATRI MCLAUGHLIN



JEREMIE TRONET



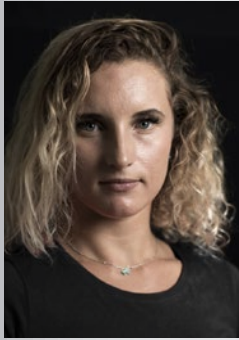
TOM COURT



SEBASTIAN RIBERO



AIRON COZZOLINO



PAULA NOVOTNA



JEROME CLOETENS



CLAUDIA LEÓN MARTINEZ

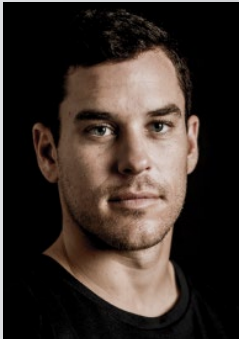


MIKAILI SOL



GABI STEINDL

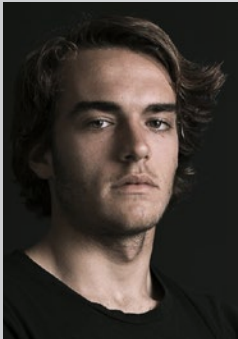
ONE
DREAM



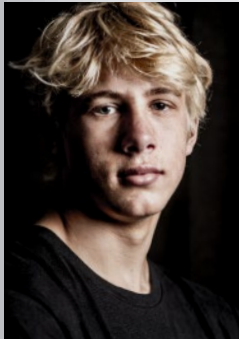
CRAIG CUNNINGHAM



STEFAN SPIESSBERGER



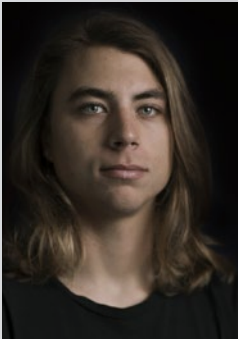
NOÉ FONT



TOM BRIDGE



JAN MARCOS RIVEIRAS



ARTEM GARASHCHENKO



MANUELA JUNGU



JULIA CASTRO



TRUE

KITEBOARDING

REBEL

NOW BY DUOTONE

THE ALL-TIME CLASSIC HIGH PERFORMANCE FREERIDE KITE, BENCHMARK IN BIG AIR SUPERIORITY AND STUNNING HANGTIME.

INTERVIEW WITH
DESIGNER KEN WINNER

WHAT DID YOU SET OUT TO
ACHIEVE FOR THE 2019 REBEL?

We spent an enormous amount of time on the 2018 Rebel in order to make it four-line capable. Whilst the 2018 model performed similarly to the 2017 Rebel, it was in every respect a totally new design. For 2019, we tried to address the small weaknesses that some riders had mentioned. By focusing on small tweaks, we were able to gain improvements in one quality or another, without affecting existing ones.

WERE THERE ANY
CHALLENGES ALONG THE WAY
AND HOW DID YOU OVERCOME
THEM?

We went through 25 or 30 prototypes for the 2019 Rebel. One goal was to improve backstall resistance, so we tried something that worked on the latest Mono. By flattening the Leading Edge arc in the center we were able to give the canopy a lower angle of attack, also in the center. Ultimately this worked, but as one can imagine, making exactly the same adjustment to a 5-Strut kite that was initially designed for a 1-Strut kite doesn't work, so we needed to dial

in the right arc curvature gradually and over several prototypes. We also wanted to fine tune the Leading Edge diameter which took a while to get it right.

WHAT ARE THE MAIN DESIGN
AND PERFORMANCE UPDATES
FOR THIS 2019 REBEL?

The Leading Edge arc is flatter in the middle for better resistance against backstall. This Leading Edge arc also gives slightly better depower and quicker turning. The LE diameter is a bit smaller in the middle which helps the Rebel fly closer to the edge and jump more vertically. The two bridle anchors are now closer to the center of the Leading Edge. This ensures that the bridle can keep the thinner central Leading Edge sections from deforming under high loads.

WHY CHOOSE THE
2019 REBEL?

There's no better jump oriented, all-around kite than the 2019 Rebel. It's especially good for heavier riders who need an extremely stable kite that can handle high loads and big power spikes.

WHICH LINE LENGTHS DO
YOU RECOMMEND ACROSS
THE DIFFERENT SIZES?

Sky and I use 22 m most of the time. For kites above 10 m, 24 m lines work best.

ANY TIPS FOR USING THE
DIFFERENT SETTINGS?

The Adaptive Tip adjustment allows the user to adjust bar pressure and choose between a light feel through the bar and a more direct feedback from the kite. A lighter bar is easier on the arms, but gives a less direct 'eyes-off' feel for the kite. Sky, Patri and I like the more direct feel. You always know where the kite is without looking and we think it feels better and more secure in jumps

IN A NUTSHELL, WHAT'S NEW
FOR THE 2019 REBEL?

We gave the 2019 Rebel small performance gains without sacrificing anything. It has improved depower and jumps are more vertical with the same impressive hangtime. Turning is much smoother and it still remains to be the ultimate jump orientated high performance freeride cruiser.

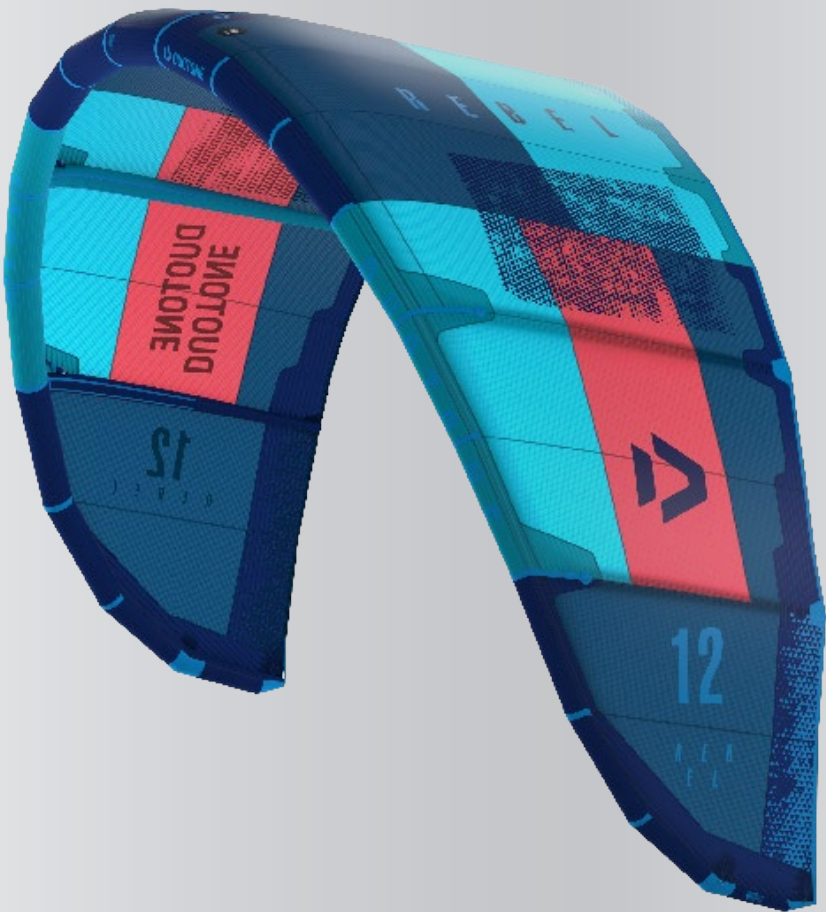
WHAT'S NEW

FLATTER CENTRE SHAPE

- ✦ The new flatter profile in the centre of the kite adds power and improves the flying characteristics. The Rebel now jumps higher and floats for longer; massive airs are even easier on the new Rebel!

REDUCED DIAMETER LEADING EDGE

- ✦ The thinner Leading Edge makes the new Rebel more efficient, but allows it to twist, increasing the turning speed and making the handling very dynamic.



CHARACTERISTICS

FREESTYLE UNHOOKED SLACK / POP

FREESTYLE HOOKED KITELOOP / FAST TURNING

FREERIDE WINDRANGE / HANGTIME / SHEET & GO

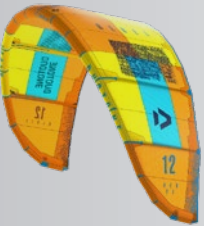
FOIL FLYING ABILITY IN LIGHT WIND

WAVE DRIFT / TURNING DEPOWERED

ENTRY EASY RELAUNCH ABILITY / STABILITY IN AIR

COLOUR COMBINATIONS

CC1 BLUE



CC2 RED

CC3 ORANGE

SIZES	5	6	7	8	9	10	11	12	13	14	15
WINDRANGE	23-42	21-40	19-38	17-36	15-34	13-32	12-29	11-26	10-23	09-21	08-20
REC. LINE LENGTH	22-24	22-24	22-24	22-24	22-24	22-24	22-24	22-24	24-27	24-27	24-27

EVO

NOW BY DUOTONE

THE EVO IS THE LEADING ALL-ROUND KITE. THE GREATEST FREERIDE FORMULA TODAY. WITH 3 STRUTS, A HUGE WIND RANGE, SUPERIOR STABILITY, PRECISE POWER DELIVERY AND RESPONSIVE HANDLING, THE EVO IS FUN AND VERSATILE FROM WAVERIDING TO FREESTYLE AND THE FIRST CHOICE OF TOM HEBERT IN ANY CONDITIONS.

INTERVIEW WITH
DESIGNER RALF GRÖSEL

WHAT DID YOU SET OUT TO ACHIEVE FOR THE 2019 EVO?

In 2018 we made the decision to reduce the number of struts on the Evo from 5 to 3. It was the final piece of the puzzle that was missing from what is now the greatest freeride formula. It really set the foundations for us to create something outstanding for 2019.

My goal was to check the boundaries on the new Evo construction. Even though it is, and will always be the ultimate all-round kite, I wanted to see how much further we could go between lightness and structure, handling performance and balance, depower and agility, fast and responsive with light steering pressure.

WERE THERE ANY CHALLENGES ALONG THE WAY AND HOW DID YOU OVERCOME THEM?

Combining all the variables and performance characteristics is more difficult than it seems. That said, the

Evo has been part of the kite range for so many years now, you can almost predict how changes will affect performance, so challenges are quick to overcome. That's why this year I pushed hard to find the Evo's boundaries and parameters. It allowed me to discover what I needed to further enhance its handling, usability, performance and jumping.

WHAT ARE THE MAIN DESIGN AND PERFORMANCE UPDATES FOR THIS YEAR'S MODEL?

Different aspect ratios can be found on the smaller sizes this year which delivers a very stable kite with epic depower. The depower performance across all sizes also allows the user to take a bigger kite if they want. You will also find that the Evo has more precise feedback combined with a lighter bar pressure which ensures great handling in strong conditions. The reduction in overall weight combined with a solid and stable frame means that wave riders will also enjoy its playfulness.

WHY CHOOSE THE 2019 EVO?

The Evo has all the qualities and performance characteristics to satisfy pretty much any rider. It's the ultimate all-round kite; an easy jumper, huge depower, stable, reactive, forgiving and with huge sheet-and-go.

IN A NUTSHELL, WHAT'S NEW FOR THE 2019 EVO?

Evo is the best all-round kite, no doubt. It's a benchmark model within our brand and the industry. Years of proven design and performance have allowed us to take the 2019 Evo to the next level and you won't be disappointed.



WHATS NEW

STRUCTURAL STIFFNESS

- ✦ The structural stiffness of the smaller sizes has been enhanced, making them rock solid even in gusty and strong winds.

REDUCED BAR PRESSURE

- ✦ Reduced bar pressure makes the kite easy to fly and very forgiving, appealing to a lot of riders across the ability spectrum.

CHARACTERISTICS

FREESTYLE UNHOOKED SLACK / POP

FREESTYLE HOOKED KITELOOP / FAST TURNING

FREERIDE WINDRANGE / HANGTIME / SHEET & GO

FOIL FLYING ABILITY IN LIGHT WIND

WAVE DRIFT / TURNING DEPOWERED

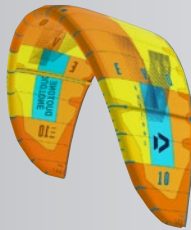
ENTRY EASY RELAUNCH ABILITY / STABILITY IN AIR

COLOUR COMBINATIONS

CC2 RED



CC1 BLUE



CC3 ORANGE

SIZES	4	5	6	7	8	9	10	11	12	13	14
WINDRANGE	25-53	23-41	21-40	19-37	17-35	15-33	13-31	12-28	11-26	10-24	9-22
REC. LINE LENGTH	22 (24)	22 (24)	22 (24)	22 (24)	22 (24)	22 (24)	22 (24)	22-24	22-24	22-24	24-27

DICE

NOW BY DUOTONE

EQUALLY AT HOME BUSTING OUT FREESTYLE MOVES LIKE RENO ROMEU AND SURFING WAVES LIKE THE WORLD CHAMPION MATCHU LOPES, THE DICE IS A VERSATILE KITE THAT IS PERFECT FOR THE RIDERS WHO LIKE TO MIX THEIR DISCIPLINES.

INTERVIEW WITH
DESIGNER RALF GRÖSEL

WHAT DID YOU SET OUT TO
ACHIEVE FOR THE 2019 DICE?

The Dice has been one of the most well received kites on the market to date. Powerful, snappy, predictable and versatile, it's as happy in the waves as it is in the park. For 2019, my main objective was to redefine the design in order to improve looping and boosting abilities especially within the smaller sizes. Having listened to market feedback and our world class team riders, we focused on reworking certain elements to ensure the smaller sizes could withstand hardcore conditions in events like the King of the Air.

WERE THERE ANY
CHALLENGES ALONG THE
WAY AND HOW DID YOU
OVERCOME THEM?

Structure plays a huge part when looking at performance vs conditions, especially in the smaller sizes. With an overall increase in structural stiffness, we had to make sure that the liveliness of the kite isn't reduced. It's not always easy but we achieved it by looking at other parameters and drawing on past experience.

WHAT ARE THE MAIN DESIGN
AND PERFORMANCE UPDATES
FOR THIS YEAR'S DICE?

The most obvious is the optimised balance between structural stiffness and drag in the smaller sizes which has dramatically enhanced jumping and looping abilities. The other is the increased length of the back pigtail to ensure perfect balance between the 'Medium' and 'Hard' setting and eliminate potential backstall.

WHY CHOOSE THE 2019 DICE?

The Dice remains to be the best option for Freestyle / Wakestyle and Mega Loop tricks, coping very well in extreme conditions. It's user friendly, versatile and is a kite that just keeps giving.

WHICH LINE LENGTHS DO YOU
USE ACROSS THE DIFFERENT
KITE SIZES?

I personally love to use 22 m lines on the Click Bar M with a 4 line configuration on anything down to 9 m. Anything smaller than this, I recommend the new small Click Bar S on 22m lines.

ANY TIPS FOR USING THE
DIFFERENT SETTINGS?

The Dice remains to be the best option for Freestyle / Wakestyle, Mega Loop tricks and even in waves, coping very well in extreme conditions. It's user friendly, versatile and is a kite that just keeps giving.

IN A NUTSHELL, WHAT'S
NEW FOR THE 2019 DICE ?

The 2019 Dice is an incredible performer and an exciting ride. Excelling across all disciplines, it has been redefined for next level looping and boosting. Smaller sizes are now fully prepared for hardcore conditions due to the updates made in structural stiffness. Get ready to go big.



WHAT'S NEW

INCREASED STRUCTURAL STIFFNESS

- ✦ The smaller sizes below 10 m increased the structural stiffness, avoiding any twisting and can handle any wind speeds – perfect for breaking height records and extreme loops.

HARD SETTING WITH 20MM LONGER PIG TAIL

- ✦ Making it the perfect set up for Freestyle / Wakestyle moves, offering massive slack. In just changing one knot!

CHARACTERISTICS

FREESTYLE UNHOOKED SLACK / POP

FREESTYLE HOOKED KITELOOP / FAST TURNING

FREERIDE WINDRANGE / HANGTIME / SHEET & GO

FOIL FLYING ABILITY IN LIGHT WIND

WAVE DRIFT / TURNING DEPOWERED

ENTRY EASY RELAUNCH ABILITY / STABILITY IN AIR

COLOUR COMBINATIONS

CC3 ORANGE



CC1 BLUE



CC2 RED

SIZES	5	6	7	8	9	10	11	12	13
WINDRANGE	24-39	21-38	20-36	18-34	16-32	14-30	13-27	12-24	11-21
REC. LINE LENGTH	22 (24)	22 (24)	22 (24)	22 (24)	22 (24)	22-24	22-24	24	24

VEGAS

NOW BY DUOTONE

THE MOST SOLD C SHAPED PERFORMANCE KITE ON THE MARKET EVER, THE CHOICE OF 5× WORLD CHAMPION AND 2× KING OF THE AIR AARON HADLOW, DESIGNED FOR WAKESTYLE AND HARDCORE FREESTYLE.

INTERVIEW WITH
DESIGNER RALF GRÖSEL

WHAT DID YOU SET OUT TO ACHIEVE FOR THE 2019 VEGAS?

The Vegas is phenomenally well established and the most sold C-kite on the market. Its rock solid foundations have allowed us to develop it over the past 11 years into a pure wakestyle / competition orientated kite with extreme boosting and mega loop potential. It performs unlike any other. It was a great position to be in as we started the 2019 design process, as it presented the opportunity to look deeper into each component. The goal was to fine tune and balance the Vegas perfectly, so I focused on tweaking small details like the wave patterns, patterns on the Leading Edge and updates in the tension settings between the LE and Strut.

WERE THERE ANY CHALLENGES ALONG THE WAY?

There weren't challenges so to speak, more a dedication to achieve a perfectly balanced kite which takes time. From the Team's perspective, the

Vegas already delivered all aspects needed to take them to the top: precise handling, unhooked pop and performance, boosting potential and impressive looping abilities. As balance is a primary requirement for riders, my approach was to evaluate the design features on the kite as well as production and materials to see how I could optimize it.

WHY CHOOSE THE 2019 VEGAS?

Continuing to be undisputed king of the C-kites, it's a benchmark model for its class. The perfect balance between the canopy tension and structural stiffness compliments the stable canopy for mega lift and punchy pop. Bringing responsive power release delay and slack to the table, handle passes and new school moves have never been so easy. The Vegas offers lots of depower and multiple set ups, including numerous trimming options. In a league of its own, those wanting a pure Wakestyle / Freestyle machine with outstanding mega loop performance should hook right in.

WHICH LINE LENGTHS DO YOU RECOMMEND ACROSS THE DIFFERENT SIZES?

Hardcore Wakestyle / Freestyle riders should use the small Click Bar bar with 22 m lines across all sizes. You can choose between a 5 and 6 line setup and it's the ultimate combination for riding unhooked in combination with the biggest loop of the Wakestyle Kit. Suited across all sizes, it's a top setup.

ANY TIPS FOR USING THE DIFFERENT SETTINGS?

For Wakestyle I recommend using a Medium depower setting with the Hard steering setting. For Freestyle I suggest the High depower setting with a Medium steering setting.

IN A NUTSHELL, WHAT'S NEW FOR THE 2019 VEGAS ?

By tweaking existing design components and smaller details, we've managed to fine tune and balance every aspect of this radical performer.



CHARACTERISTICS

FREESTYLE UNHOOKED SLACK / POP

FREESTYLE HOOKED KITELOOP / FAST TURNING

FREERIDE WINDRANGE / HANGTIME / SHEET & GO

FOIL FLYING ABILITY IN LIGHT WIND

WAVE DRIFT / TURNING DEPOWERED

ENTRY EASY RELAUNCH ABILITY / STABILITY IN AIR

COLOUR COMBINATIONS

CC1 BLUE (HADLOW)



CC2 RED



CC3 ORANGE

SIZES	6	7	8	9	10	11	12	13	14,5
WINDRANGE	23-38	21-36	19-34	17-32	15-30	14-27	13-24	12-21	11-20
REC. LINE LENGTH	22	22	22	22	22	22-24	22-24	22-24	22-24

NEO

NOW BY DUOTONE

THE HIGH-PERFORMANCE PURE WAVE RIDING KITE, SECURING AIRTON COZZOLINO AND MATCHU LOPES 3× WORLD CHAMPION TITLES OVER THE LAST THREE YEARS, IMPRESSING WITH INCREDIBLE HANDLING AND EXCELLENT DRIFTING CAPABILITIES THAT CAN ALSO PERFORM FOR FREERIDING AND FOILING.

INTERVIEW WITH DESIGNER
KEN WINNER

WHAT DID YOU SET OUT TO ACHIEVE FOR THE 2019 NEO?

Above all we want to ensure that the Neo never loses it's central purpose, which is to be the go-to surf kite for top level, hardcore wave riders like Airton, Sky and Patri. We're always tweaking and adjusting to find the best possible combination of power, turning, drift and intuitive bar feel.

WERE THERE ANY CHALLENGES ALONG THE WAY AND HOW DID YOU OVERCOME THEM?

No, no unusual challenges. Our design and testing process runs smoothly, like an expensive German automobile. We look for kite qualities that can be improved and we systematically test design mods intended to achieve the improvements. This was a straightforward process of design, build, test, design, build test.

WHAT ARE THE MAIN DESIGN AND PERFORMANCE UPDATES FOR THIS YEAR'S MODEL?

The leading edge arc is flatter in the middle which gives better resistance to backstall.

LE segments are longer which moves bridle anchor points out and down. This gives the Neo a more surf-oriented feel and performance; more continuous power while turning the kite and better drift.

The above changes have permitted us to go a little bigger in the LE and deeper in the canopy profile for more grunt, more continuous power in turns and better drift.

The 2018 Neo had a little hiccup in the turns when being yanked around hard in a good breeze. We got rid of that.

WHY CHOOSE THE 2019 NEO?

There's no better wave kite for anyone who wants to achieve serious performance improvements in their wave riding.

WHICH LINE LENGTHS DO YOU RECOMMEND ACROSS THE DIFFERENT SIZES?

This is an issue of personal preference, but Sky and I use 22 m a lot on sizes 5 m to 10 m. The 11 m and 12 m are a bit more nimble on 20 s, though loose a little power. The 3 m and 4 m are clearly better on 24 m as the longer lines smooth out and lengthen the power stroke.

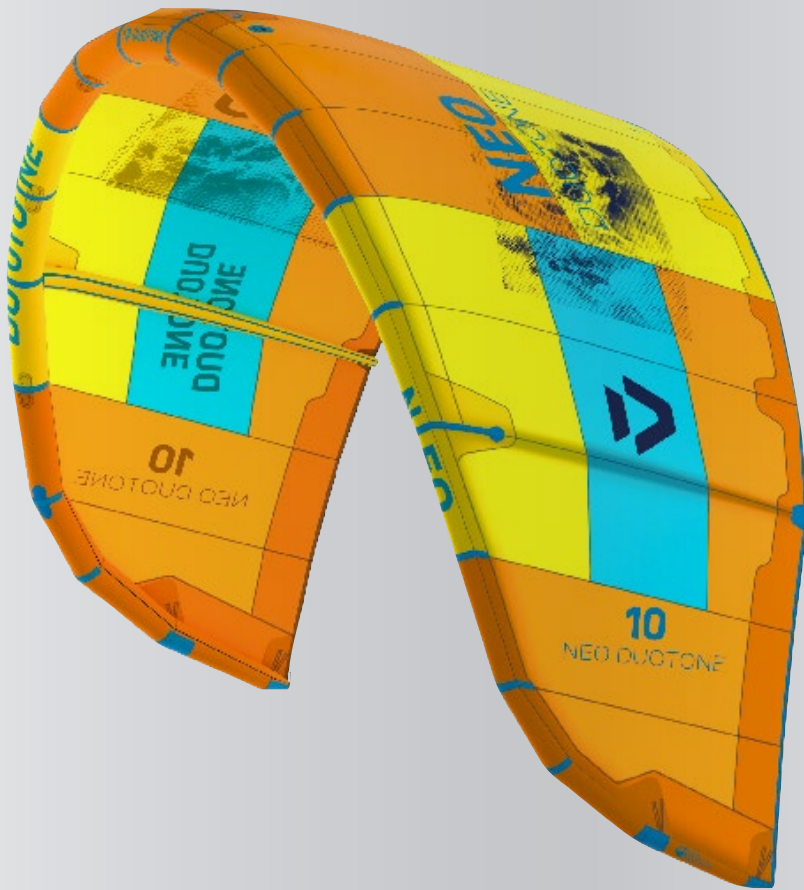
ANY TIPS FOR USING THE DIFFERENT SETTINGS?

The Adaptive Tip adjustment allows the user to adjust bar pressure and choose between a light feel through the bar or more direct feedback from the kite. A lighter bar is easier on the arms but gives a less direct 'eyes-off' feel for the kite.

The front bridle adjustment allows you to choose between a more surfy feel or a more depowered freeride feel.

IN A NUTSHELL, WHAT'S NEW FOR THE 2019 NEO?

The 2019 Neo remains true to its roots and its purpose in life. It's the go-to surf kite for all good and aspiring wave riders. This year even more surf oriented.



WHATS NEW

SPECIAL FLEX SEGMENT INTEGRATED INTO THE LEADING EDGE

✚ LE segments are longer which moves bridle anchor points out and down. These changes have permitted us to go a little bigger in the LE and deeper in the canopy profile. This gives the Neo a more surf-oriented feel, more continuous power and grunt while turning the kite and better drift.

CHARACTERISTICS

FREESTYLE UNHOOKED SLACK / POP

FREESTYLE HOOKED KITELOOP / FAST TURNING

FREERIDE WINDRANGE / HANGTIME / SHEET & GO

FOIL FLYING ABILITY IN LIGHT WIND

WAVE DRIFT / TURNING DEPOWERED

ENTRY EASY RELAUNCH ABILITY / STABILITY IN AIR

COLOUR COMBINATIONS

CC3 ORANGE



CC1 BLUE

CC2 RED

SIZES	3	4	5	6	7	8	9	10	11	12
WINDRANGE	29-42	26-40	23-38	21-36	19-34	17-32	15-30	13-28	12-25	11-22
REC. LINE LENGTH	22 (24)	22 (24)	22 (24)	22 (24)	22 (24)	22 (24)	22-24	22-24	22-24	22-24

CHOOSE YOUR BAR

CLICK BAR

CLICK BARS

4 4 9 0 0 - 3 2 0 2



PERFORMANCE FEATURES

- + Now available as Click Bar M with 22 m line length plus 2 m extensions (47 cm wide) and Click Bar S with 20 m line length plus 2 m extensions (42 cm wide)
- + Adjustable line length and V position
- + Compatible with most kites on the market

TECH DETAILS

- + Automatic untwisting safety system
- + Iron Heart V
- + 4 or 5 lines (with the 5th line upgrade kit); 42 cm compatible with Hadlow Setup

CLICK BAR M

4 4 9 0 0 - 3 2 0 2



TRUST BAR

TRUST BARS/M

4 4 9 0 0 - 3 2 0 1



PERFORMANCE FEATURES

- + Single front line safety
- + Easy to use
- + Compatible with most kites on the market

TECH DETAILS

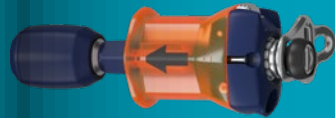
- + Suicide Ring III for fixed suicide mode
- + Iron Heart IV
- + 4 or 5 lines (with the 5th line upgrade kit)

TRUST BAR M/L

4 4 9 0 0 - 3 2 0 1



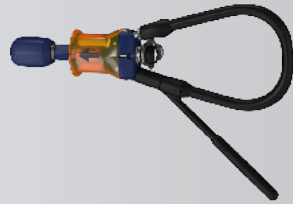
5TH ELEMENT UPGRADE KIT CAN BE ORDERED SEPARATELY



AND YOUR STYLE

WAKESTYLE KIT

4 4 9 0 0 - 8 1 5 1

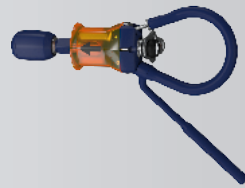


KEY FEATURES

- + **Big leash included**
- + Huge loop for easy unhooking and hooking back in
- + Long neoprene covered leash gives maximum freedom to move, comfort and prevents injuries
- + Length of freestyle leash makes several rotations possible

FREESTYLE KIT

4 4 9 0 0 - 8 1 2 0



KEY FEATURES

- + **Big leash included**
- + Large loop for easy unhooking and hooking back in
- + Long, soft, neoprene covered leash for easy and comfortable passing of the bar

FREERIDE KIT

4 4 9 0 0 - 8 1 1 9



KEY FEATURES

- + **Small leash included**
- + Small chicken loop for a bigger depower stroke
- + Shorter leash for less tangling
- + Not designed for unhooking

ROPE HARNESS KIT

4 4 9 0 0 - 8 1 2 1



KEY FEATURES

- + **Small leash included**
- + Smooth sliding of the rope in combination with rope harnesses, no wear on the rope
- + Direct connection to the Iron Heart results in a bigger depower stroke
- + No irritating chicken dig

DOUBLE DIFFUSOR

BOTTOM CONCEPT

DELIVERING A SPORTY PERFORMANCE
WITH ALL THE COMFORT YOU NEED.



CONNECTED FEEL

The Double Diffusor breaks the water's surface and delivers a precise, connected feedback. It also provides good control in all conditions with a sporty character for everyday use.

BETTER POP

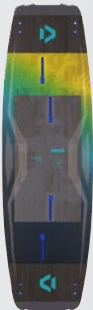
The Double Diffusor allows for harder flex patterns to be used within the board without the loss of comfort. The harder flex delivers better pop making it a winning combination.

BETTER LANDINGS

By breaking the water's surface when landing, the Double Diffusor delivers fluidity and instant planing of the board. This ensures control and comfort when landing, no matter how fast you're going.



JAIME TEXTREME
44900-3421



JAIME
44900-3420



SPACE FLEX

TECHNOLOGY

- + Space Flex adapts to the water's surface and enhances all turning characteristics
- + Stiff outside frame coupled with the soft tips creates smooth water release and early planing
- + Reduction in swing weight facilitates easier tricks and faster rotations



SELECT TEXTREME
44900-3426



SELECT
44900-3425



SOLEIL TEXTREME
44900-3430



SOLEIL
44900-3429



PRO WHIP

NOW BY DUOTONE

WHATS NEW

SUBTLE WINGER IN THE OUTLINE BEHIND THE FRONT FINS

Reduces the tail area slightly, this prevents the tail lifting out during high-speed turns and also allows for tighter snaps and more precise and controlled rail and fin release.

PERFORMANCE FEATURES

- + Fast and stable
- + Direct feedback and positive rail grip
- + Perfect for tight snaps and carves

TECH DETAILS

- + Light Team Construction
- + Cork Shock Absorber 2.0
- + Vacuum Epoxy Custom



PRO WHIP
44900-3409

WHATS NEW

PURE STRAPLESS FREESTYLE DESIGN

A brand new breed of board, made for strapless freestyle on flat water, inspired by the radical freestyle antics of our team riders Airton Cozzolino and Matchu Lopes.

SYMMETRICAL SHAPE

Allows the board to spin predictably around a central axis when doing spins and shove-its.

DEEP DOUBLE BARREL CHANNEL

Splits the water to cushion and absorb landings, offering the ability to land hard and fast without losing momentum or bouncing out.

STRAIGHT NARROW OUTLINE

Offers maximum speed and stability

MAXIMUM POP

Thanks to a straight rail line and optimized fin placement.

PERFORMANCE FEATURES

- + Pure strapless freestyle design
- + Fast and stable
- + Huge pop

TECH DETAILS

- + Light Team Construction
- + Cork Shock Absorber 2.0
- + Vacuum Epoxy Custom

PRO VOKE

NEW BY DUOTONE



DUOTONE

QUICKFINDER



SIZES

COLOURS

AVAILABLE

CATEGORY

PRODUCT PROFILE

PERFORMANCE FEATURES

TECHNICAL DETAILS

VEGAS
44900-3001
44900-3006 **HADLOW**



6 7 8 9 10 11 12 13 14.5

CC1 - BLUE (HADLOW)
CC2 - RED
CC3 - ORANGE

AUGUST 2018

WAKESTYLE / FREESTYLE

The most sold C shaped performance kite on the market ever, the choice of 5× World Champion and 2× King of the Air Aaron Hadlow, designed for wakestyle and hardcore freestyle.

- ✦ Amazing unhooked performance and pop
- ✦ Responsive power release delay
- ✦ Three available setups and numerous trimming options

- ✦ Pure C kite design
- ✦ Five-strut design
- ✦ Loaded 5th Line

DICE
44900-3002



5 6 7 8 9 10 11 12 13

CC1 - BLUE
CC2 - RED
CC3 - ORANGE

AUGUST 2018

FREESTYLE / WAVE

Equally at home busting out freestyle moves like Reno Romeu and surfing waves like the World Champion Matchu Lopes, the Dice is a versatile kite that is perfect for the riders who like to mix their disciplines.

- ✦ Exceedingly powerful lift and huge jumping abilities
- ✦ Very precise steering
- ✦ Perfect for kiteloops and excellent unhooked pop

- ✦ Solid LE Frame Design for ideal handling and jumping abilities
- ✦ Four-line bridled 3 strut design
- ✦ Four and five line setup

EVO
44900-3003



4 5 6 7 8 9 10 11 12 13 14

CC1 - BLUE
CC2 - RED
CC3 - ORANGE

OCTOBER 2018

FREERIDE / FREESTYLE / WAVE

Three struts, an incredible wind range, precise power delivery, amazing stability and responsive handling, combine to make the EVO the first choice of Air Styler Tom Hebert and the best all-rounder out there.

- ✦ Best all-rounder of the range
- ✦ Easy water relaunch
- ✦ Powerful lift and huge hangtime

- ✦ Delta kite
- ✦ Three-strut design
- ✦ Four and five line setup

NEO
44900-3004



3 4 5 6 7 8 9 10 11 12

CC1 - BLUE
CC2 - RED
CC3 - ORANGE

AUGUST 2018

WAVE

The high-performance pure wave-riding kite, securing Airton Cozzolino and Matchu Lopes 3× World Champion titles over the last three years, impressing with incredible handling and excellent drifting capabilities that can also perform for freeriding and foiling.

- ✦ Fantastic drifting abilities
- ✦ Responsive steering whether powered or depowered
- ✦ Very powerful - choose one size smaller - but with huge depower

- ✦ Flex Segment Leading Edge design to improve turning speed
- ✦ Adjustable front bridle for freeride tuning setup
- ✦ Four and five line setup

REBEL
44900-3000



5 6 7 8 9 10 11 12 13 14 15

CC1 - BLUE
CC2 - RED
CC3 - ORANGE

AUGUST 2018

HIGH PERFORMANCE
FREERIDE / BIG AIR

The all-time classic high performance freeride kite, benchmark in big air superiority and stunning hangtime.

- ✦ Excellent hangtime and lift for the highest and longest jumps
- ✦ Biggest wind range
- ✦ Best sheet and go power development

- ✦ Reduced diameter leading edge
- ✦ Flatter centre shape
- ✦ Four and five line setup

MONO
TBA



3.5 5 7 9 11 13 15

TBA

FEBRUARY 2019

FREERIDE / FOIL

Light, simple and devastatingly good, the Mono is a fantastic all-rounder that features just one strut and incredible handling!

- ✦ Great handling in light wind
- ✦ Quick and easy to relaunch
- ✦ Excellent low end and upwind performance

- ✦ Light and robust one strut design
- ✦ Additional Dacron reinforcements for durability
- ✦ Four and five line setup

JUICE
TBA



13 15 17

CC1 - BLUE

SPRING 2019

FREERIDE / LIGHTWIND / FOIL

The ultimate low-wind, inflatable kite for riders who value performance and handling in the lightest of breezes, guaranteeing you some lonely sessions in nearly no wind.

- ✦ Easy handling with easy water relaunch
- ✦ Excellent low-end power and jumping abilities
- ✦ Smaller sizes for foiling, bigger sizes for lightwind kiting on twintips and surfboards.

- ✦ Lightweight construction
- ✦ Three-strut design
- ✦ Four and five line setup

ACE
TBA



TBA

TBA

SPRING 2019

FREERIDE / FOIL

A high-performance foil kite for freeriding and foiling, perfect for riders wanting the advantages of a foil without the hassle of a thoroughbred race kite.

- ✦ Huge wind range, massive depower
- ✦ Fast, direct turning and powerful lift
- ✦ Easy water relaunch, individual chambers stay inflated

- ✦ Ultra lightweight and long-lasting materials
- ✦ Trust Bar Foil and Click Bar compatible
- ✦ Exceedingly durable construction

SIZES

COLOURS

AVAILABLE

CATEGORY

PRODUCT PROFILE

PERFORMANCE FEATURES

TECHNICAL DETAILS

CLICK BAR
44900-3202



TRUST BAR
44900-3201



LINE LENGTH

AVAILABLE

UPGRADE KIT

PERFORMANCE
FEATURES

TECHNICAL DETAILS

RECOMMENDED
KITES

S: 20 + 2 m
M: 22 + 2 m

S / M: 19 / 22 m
M / L: 24 / 27 m

AUGUST 2018

AUGUST 2018

5TH ELEMENT UPGRADE KIT CLICK BAR
44900-8106

5TH ELEMENT UPGRADE KIT TRUST BAR
44900-8105

HADLOW UPGRADE KIT (CLICK BAR SMALL)
44900-8180

- ✦ Now available as Click Bar M with 22 m line length plus 2 m extensions (47 cm wide) and Click Bar S with 20 m line length plus 2 m extensions (42 cm wide)
- ✦ Adjustable line length and V position
- ✦ Compatible with most kites on the market

- ✦ Single front line safety
- ✦ Easy to use
- ✦ Compatible with most kites on the market






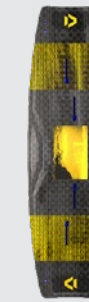
- ✦ Automatic untwisting safety system
- ✦ Iron Heart V
- ✦ 4 or 5 lines – with the 5th line upgrade kit
- ✦ Compatible with Hadlow Setup

- ✦ Suicide Ring III for fixed suicide mode
- ✦ Iron Heart IV
- ✦ 4 or 5 lines – with the 5th line upgrade kit

Vegas / Dice / Evo / Neo / Mono / Rebel / Juice

Dice / Evo / Neo / Mono / Rebel / Juice



	GAMBLER 44900-3424	TS HADLOW 44900-3423	TEAM SERIES 44900-3422	JAIME TEXTREME 44900-3421	JAIME 44900-3420	SELECT TEXTREME 44900-3426
						
SIZES	135 / 41.5 139 / 42 143 / 42.5	140 / 42.5	134 / 41 138 / 42 142 / 43	133 / 40 136 / 41 139 / 42 142 / 43	130 / 39 133 / 40 136 / 41 139 / 42 142 / 43	132 / 39 135 / 40 138 / 41 141 / 42
AVAILABLE	AUGUST 2018	AUGUST 2018	AUGUST 2018	AUGUST 2018	AUGUST 2018	AUGUST 2018
CATEGORY	WAKESTYLE / PARK RIDING	COMPETITION FREE- STYLE / WAKESTYLE	COMPETITION FREESTYLE	PERFORMANCE FREESTYLE	FREESTYLE	PERFORMANCE FREERIDE
PRODUCT PROFILE	The optimum board for wakestyle and park riding, a board that takes it all no matter what, making it the best choice for Craig Cunningham and Colleen Carroll.	Aaron Hadlow's weapon of choice for freestyle, park and big air competition, packed with the kind of performance characteristics a World Champion deserves!	An incredible freestyle board with competition riding embedded into its very core, high performance with no compromises, making it the right board for the GKA Air Games!	The most high-performance freeride and freestyle board on the market today, suited to both hooked and unhooked riding! This year it's completely redesigned and equipped with the new and fantastic Double Diffusor.	The most popular twin tip on the planet, the Jaime, defines an era and a style that many riders aspire to. This year it's completely redesigned, offering the new and fantastic Double Diffusor Bottom and again made a huge step forward.	The completely new Space Flex Technology delivers a superlative ride thanks to its unique combination of weight, comfort and speed. It simply defines high performance freeride.
PERFORMANCE FEATURES	<ul style="list-style-type: none">+ Generous rocker for optimum control when landing+ Deep channels to ensure high performance without fins+ Exceedingly robust and durable construction further enhanced by Slick Base for park riding	<ul style="list-style-type: none">+ Explosive pop thanks to robust Biax Carbon Construction+ Minimum reverse flex ensures absolute control on landings+ Step Double Concave Wide Channel for maximum grip	<ul style="list-style-type: none">+ Explosive pop thanks to robust Biax Carbon Construction+ Minimum reverse flex ensures absolute control on landings+ Deep channels for maximum grip	<ul style="list-style-type: none">+ Connected, comfortable ride and soft landings due to new Double Diffusor Bottom+ Exceedingly lightweight and very responsive due to Textreme Carbon+ Biax Textreme Carbon for dynamic ride and incredible pop	<ul style="list-style-type: none">+ Connected, comfortable ride and soft landings due to new Double Diffusor Bottom+ Incredibly responsive and sporty Carbon Beam+ Channels ensure easy take offs and great grip	<ul style="list-style-type: none">+ Space Flex Technology to gain comfort as well as performance and to save weight+ Grab Rails for easier board off manoeuvres and comfortable general handling+ Flat rocker for early planing, lightning fast speed and incredible upwind performance
TECHNICAL DETAILS	<ul style="list-style-type: none">+ Hard flex+ Step Double Concave Slick Base Narrow Channel+ Biax Fibre Construction	<ul style="list-style-type: none">+ Hard flex+ Slick Base+ Premium Performance Construction	<ul style="list-style-type: none">+ Hard flex+ Step Double Concave Wide Channel+ Premium Performance Construction	<ul style="list-style-type: none">+ Medium to hard flex+ New Double Diffusor Bottom for maximum grip and comfort+ Textreme Carbon Construction	<ul style="list-style-type: none">+ Medium flex+ New Double Diffusor Bottom for maximum grip and comfort+ Premium Construction	<ul style="list-style-type: none">+ Soft flex+ Step Mono Concave Bottom+ Textreme Carbon Construction

	SELECT 44900-3425	SOLEIL TEXTREME 44900-3430	SOLEIL 44900-3429	GONZALES 44900-3431	SPIKE TEXTREME 44900-3428	SPIKE 44900-3427
						
SIZES	132 / 39 135 / 40 138 / 41 141 / 42	132 / 38 136 / 39	128 / 37 132 / 38 136 / 39	130 / 38 134 / 40 138 / 41.5 142 / 43 151 / 44	153 / 46.5	141 / 44.5 153 / 46.5 163 / 46.5
AVAILABLE	AUGUST 2018	AUGUST 2018	AUGUST 2018	AUGUST 2018	AUGUST 2018	AUGUST 2018
CATEGORY	FREERIDE	PERFORMANCE FREERIDE	FREERIDE / ENTRY FREESTYLE	FREERIDE	HIGH PERFORMANCE FREERIDE / LIGHTWIND	FREERIDE / LIGHTWIND
PRODUCT PROFILE	An incredibly easy to ride freeride board, equipped with the completely new Space Flex Technology that is perfect for ambitious and advanced freeriders, looking for a combination of comfort and performance.	Designed for women by women, the Soleil Textreme is the high performance version of the Soleil, equipped with the completely new Space Flex Technology, offering that extra bit of lightweight and bling.	Designed for women, by women, this impressive freeride board is equipped with the completely new Space Flex Technology, perfect for riders looking to perfect their first freestyle moves.	Designed for entry-level riders looking to progress quickly, the Gonzales is perfect for those first steps and will keep you entertained as you progress towards your first freeride tricks.	Fast and dynamic this is the ultimate light wind machine for riders who value performance above all else.	Light winds are no longer dull, with the new Spike the skies the limit!
PERFORMANCE FEATURES	<ul style="list-style-type: none">+ Space Flex Technology to gain comfort as well as performance and to save weight+ Grab Rails for easier board off manoeuvres and comfortable general handling+ Carbon Beam for increased reactivity and reduced weight	<ul style="list-style-type: none">+ Space Flex Technology to gain comfort as well as performance and to save weight+ Grab Rails for easier board off manoeuvres and comfortable general handling+ Carbon Beam and Textreme construction for increased reactivity and reduced weight	<ul style="list-style-type: none">+ Space Flex Technology to gain comfort as well as performance and to save weight+ Grab Rails for easier board off manoeuvres and comfortable general handling+ Carbon Beam for increased reactivity and reduced weight	<ul style="list-style-type: none">+ Rounded outline gives unrivalled control+ Very comfortable in all conditions+ Five sizes for every type of rider	<ul style="list-style-type: none">+ Flat rocker and straight outline for early planing and excellent upwind performance+ Huge surface area for fantastic performance in lighter winds+ Textreme Carbon and Biax Construction for a dynamic ride	<ul style="list-style-type: none">+ Flat rocker and straight outline for early planing and excellent upwind performance+ Huge surface area for fantastic performance in lighter winds+ Stiffer flex in the smaller sizes for incredible pop
TECHNICAL DETAILS	<ul style="list-style-type: none">+ Soft flex+ Step Mono Concave Bottom+ Premium Construction	<ul style="list-style-type: none">+ Soft flex+ Step Mono Concave Bottom+ Textreme Carbon Construction	<ul style="list-style-type: none">+ Soft flex+ Step Mono Concave Bottom+ Premium Construction	<ul style="list-style-type: none">+ Soft flex+ Mono Concave Bottom+ Biax Fibre Construction	<ul style="list-style-type: none">+ Medium flex+ Mono Concave Bottom+ Textreme Carbon Construction	<ul style="list-style-type: none">+ Medium to hard flex+ Mono Concave Bottom+ Biax Fibre Construction

PRO SESSION
44900-3402



5'11" × 18 1⁄8" × 2 3⁄8" – 26.1L
5'8" × 17 3⁄4" × 2 3⁄8" – 22.4L

SEPTEMBER 2018

ALL ROUND, CARVING MACHINE

A fast, high-performance surfboard, which can be ridden with or without straps. The Pro Session is the choice for Airtón, Matchu, Sebastian and Patri when the Waves get big and fast, being the optimum board for carving big turns on medium to big waves with maximum control.

- ✦ Excellent carving abilities
- ✦ Strapped or strapless
- ✦ Handles lots of speed with plenty of control

- ✦ Light Team Construction
- ✦ Cork Shock Absorber 2.0
- ✦ Vacuum Epoxy Custom

PRO WAM
44900-3406



6'0" × 18 3⁄8" × 2 3⁄8" – 27.9L
5'10" × 18 3⁄8" × 2 1⁄4" – 25.4L
5'8" × 18" × 2 1⁄8" – 23L
5'6" × 17 5⁄8" × 2" – 20.1L

SEPTEMBER 2018

STRAPLESS PURE SURF

The Pro Wam is a great all-rounder and able to handle all sorts of wave conditions. It is built around a high-performance, yet traditional shape that excels in most conditions from small to large waves.

- ✦ Best all-rounder across the broadest range of conditions
- ✦ Excellent balance of grip and explosive snaps off the top
- ✦ Superior speed generation with lots of control

- ✦ Light Team Construction
- ✦ Cork Shock Absorber 2.0
- ✦ Vacuum Epoxy Custom

PRO WHIP CSC
44900-3409



5'4" × 19" × 2 3⁄8" – 26.4L
5'2" × 18 1⁄2" × 2 1⁄4" – 23.4L
5'0" × 18" × 2 1⁄8" – 21L

SEPTEMBER 2018

SMALL TO MEDIUM WAVE
AND STRAPLESS FREESTYLE

Modern high-performance compact shape, aimed at performing in small to medium waves.

- ✦ Direct feedback and positive rail grip
- ✦ Perfect for tight snaps and smooth carves
- ✦ Fast and stable

- ✦ Light Team Construction
- ✦ Cork Shock Absorber 2.0
- ✦ Vacuum Epoxy Custom

PRO VOKE CSC
44900-3412



5'3" × 18" × 2 3⁄8" – 24.1L
5'1" × 17 1⁄2" × 2 3⁄8" – 21.5L

SEPTEMBER 2018

PURE STRAPLESS FREESTYLE

The pinnacle of strapless freestyle performance, the all-new Duotone Pro Voke is an Airtón Cozzolino inspired strapless freestyle competition board, designed to be on the top step of the podium.

- ✦ Pure strapless freestyle design
- ✦ Huge pop
- ✦ Fast and stable

- ✦ Light Team Construction
- ✦ Cork Shock Absorber 2.0
- ✦ Vacuum Epoxy Custom

WAM
44900-3405



5'10" × 18 3⁄8" × 2 1⁄4" – 25.4L
5'8" × 18" × 2 1⁄8" – 23L
5'6" × 17 3⁄8" × 2" – 20.4L

SEPTEMBER 2018

PURE SURF

The pinnacle of what a do-it-all surfboard should be, a traditional shape with a modern twist, this high-performance board excels in every kind of wave.

- ✦ Incredible all-rounder that excels in all conditions
- ✦ Fantastic grip and explosive snappy top turns
- ✦ Handles lots of speed with plenty of control

- ✦ Vacuum Bamboo Tec Construction
- ✦ Cork Shock Absorber
- ✦ Concave deck with grab rail

WHIP CSC
44900-3408



5'4" × 19" × 2 3⁄8" – 26.4L
5'2" × 18 1⁄2" × 2 1⁄4" – 23.4L
5'0" × 18" × 2 1⁄8" – 21L

SEPTEMBER 2018

SMALL TO MEDIUM WAVES AND
STRAPLESS FREESTYLE

Designed for small to medium sized waves, the Whip is a modern high-performance design packed into a compact shape.

- ✦ Direct feedback and impressive rail grip
- ✦ Perfect for tight snaps and smooth carves
- ✦ Fast and stable

- ✦ Vacuum Bamboo Tec Construction
- ✦ Cork Shock Absorber
- ✦ Concave deck with grab rail

NUGGET CSC
44900-3400



5'3" × 21" × 2 3⁄8" – 30.9L
5'0" × 20 1⁄4" × 2 3⁄8" – 25.5L

SEPTEMBER 2018

LIGHT WIND AND SMALL WAVES

A short, wide board that allows you to have lots of fun in marginal conditions and light winds.

- ✦ Early planing
- ✦ Great upwind ability
- ✦ Incredible speed generation in small waves

- ✦ Vacuum Bamboo Tec Construction
- ✦ Cork Shock Absorber
- ✦ Concave deck with grab rail

QUEST TT
44900-3410



5'10" × 18 3⁄8" × 2 1⁄4" – 24.9L




SEPTEMBER 2018




WAVE FREERIDING

A classic design that is extremely versatile, very durable and perfect for first-time wave riders.

- ✦ Easy to control
- ✦ Extremely stable
- ✦ Excellent value

- ✦ TT Construction

TECHNICAL DETAILS	DUOTONE TRUE KITEBOARDING		
	PACE TBA	FREE TBA	HYBRID TBA
			
	SIZES		
	4'3" × 17 5⁄8" × 2 3⁄8" – 19.56 L 4'6" × 18" × 2 1⁄8" – 22.57 L 4'10" × 18" × 2 1⁄8" – 22.57 L	4'0" × 18 1⁄4" 4'6" × 18 1⁄4" 5'0" × 18 5⁄8"	tba
	AVAILABLE		
TECHNICAL DETAILS	FOIL MOUNT	PRODUCT PROFILE	CONSTRUCTION
	Slider	High Performance Freeride board offering that bit more extra volume necessary for early planning and maximum lightwind performance. The slider offers a wide range of connection variations.	Surfboard construction partially reinforced with Bamboo
	4 point	Robust and versatile Freeride Board at a very appealing price point.	Twintip construction with cork deck
	4 point	Surf- and Foil-Hybrid based on the Whip 2019. The perfect one board solution and travel companion.	Surfboard construction (Pro construction)
	PERFORMANCE FEATURES		
	<ul style="list-style-type: none">Maximum comfort and controlRebound SafetyEasy take off and smooth surface jibes	<ul style="list-style-type: none">Easy to controlEarly planningEasy handling due to the low volume	<ul style="list-style-type: none">Fast and stableAmazing speed generationDirect feedback and positive rail gripPerfect for tight snaps and carves
TECHNICAL DETAILS	PERFORMANCE FEATURES		
	<ul style="list-style-type: none">SlidersDouble Concave Deck3 Straps Setup	<ul style="list-style-type: none">4-Point2 and 3 Strap setupCork DeckMulticore	<ul style="list-style-type: none">Light Team ConstructionCork Shock Absorber 2.0Concave Deck with Grab RailVacuum Epoxy Construction

QUICKFINDER FOILS		
RACE LTD TBA	SPEEDSTER TBA	SONIC CARBON TBA
		
tba	tba	tba
SPRING 2019	SPRING 2019	SPRING 2019
tba	tba	tba
tba	tba	tba
tba	tba	tba
+ tba	+ tba	+ tba
+ tba	+ tba	+ tba

SINGLE BOARDBAG TWINTIP
44900-7015



143 × 45 cm – 1.3 kg
Available October 2018



SINGLE BOARDBAG CSC
44900-7016



5'4" – 162 × 54 cm – 1.6 kg
Available October 2018



SINGLE BOARDBAG SURF
44900-7017



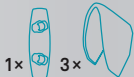
6'0" – 181 × 47 cm – 1.5 kg
Available October 2018



TEAM BAG 145
44900-7011



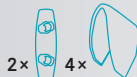
145 × 45 cm – 3.27 kg
Available October 2018



TEAM BAG 165
44900-7011



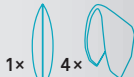
165 × 48 cm – 3.58 kg
Available October 2018



TEAM BAG SURF
44900-7012



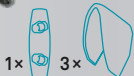
6'0" – 186 × 53 cm – 3.86 kg
Available October 2018



COMBI BAG 139
44900-7010



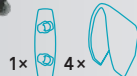
140 × 43 cm – 3.67 kg
Available October 2018



COMBI BAG 152
44900-7010



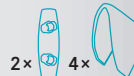
153 × 47 cm – 3.82 kg
Available October 2018



COMBI BAG 165
44900-7010



167 × 50 cm – 3.95 kg
Available October 2018



COMBI BAG 186
44900-7010



186 × 53 cm – 4.2 kg
Available October 2018



TRAVELBAG
44900-7000



90 × 40 × 35 cm – 5.15 kg
Available October 2018

DAYBAG
44900-7001



49 × 33 × 18 cm, 25 L – 0.89 kg
Available October 2018

FOIL BAG
44900-7050



Available October 2018

EXTENSION KITEBAG
44900-7020



Available October 2018



DUOTONE EDITION I DUOTONE BAGS BY ION

VARIO COMBO
44900-3310



Available August 2018

ENTITY COMBO
44900-3311



Available August 2018

DUOTONE BOOT
44900-4300



Available September 2018

SURF STRAP
44900-8070



Available September 2018

KITE VEST SEAT
44900-7030



Available October 2018

KITE VEST WAIST
44900-7031



Available October 2018

APEX 7
44900-4721



Available August 2018

APEX CS 15
44900-4720



Available August 2018

RADAR
44900-4722



Available August 2018

TRACTION PAD PRO BACK
44900-8037



Available September 2018

TRACTION PAD PRO FRONT
44900-8032



Available September 2018

TRACTION PAD TEAM FRONT
44900-8038



Available September 2018

TS-M FRONT FINS
44900-8019



Available September 2018

TS-M FINS
44900-8018



Available September 2018

TS-NQ FINS
44900-8021



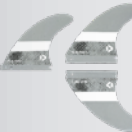
Available September 2018

TS-M FRONT FINS W/T NQ
44900-8020



Available September 2018

TS-M PRO I FINS
44900-8022



Available September 2018

TS-S PRO II FINS
44900-8025



Available September 2018

TS-M PRO II FINS
44900-8024



Available September 2018

FINBOX GLASS 15
44900-3302



Available August 2018

FINBOX CARBON 30
44900-3301



Available August 2018

KITEPUMP
44900-7060



Available August 2018

PIQ
44900-7055



Available August 2018

ROCKET TOOL
44900-8152



Available August 2018

BINDINGS

VESTS / HARNESSES

FOOTPADS

FINS

TOOLS

MEN

TEE SS DUOTONE
44902-5010



Available September 2018

TEE SS INSIDE-OUT
44902-5006



Available September 2018

TEE SS RASTERIZE
44902-5008 - WHITE



Available September 2018

44902-5008 - BLUEBIRD



Available September 2018

TEE SS ORIGINAL
44902-5000 - WHITE



Available September 2018

44902-5000 - BLUE



Available September 2018

TEE SS POCKET
44902-5002 - BLACK



Available September 2018

44902-5002 - ANTIC LILA



Available September 2018

TEE SS LOGO
44902-5004



Available September 2018

ZIP HOODIE LOGO
44902-5200 - ANTIC LILA



Available September 2018

44902-5200 - GREY



Available September 2018

BOARDSHORTS 17"
44902-5752



Available September 2018

BOARDSHORTS 19"
44902-5750



Available September 2018

TEE SS INSIDE-OUT
44903-5009



Available September 2018

TEE SS LOGO
44903-5005



Available September 2018

TEE SS ORIGINAL
44903-5001



Available September 2018

TEE SS WAVES
44903-5007



Available September 2018

TEE SS VELVET
44903-5003



Available September 2018

ZIP HOODIE LOGO
44903-5201



Available September 2018

SWEATER TEAM
44900-5210



Available September 2018

PONCHO
44900-7040



Available September 2018

NEW ERA - LOGO
44900-5910



Available September 2018

NEW ERA - DUOTONE
44900-5911



Available September 2018

NEW ERA - JERSEY LOGO
44900-5912



Available September 2018

NEW ERA - FRESH
44900-5914



Available September 2018

NEW ERA - SURF
44900-5913 - WHITE



Available September 2018

44900-5913 - BLUE



Available September 2018

NEW ERA - BOLD
44900-5915 - PURPLE-BLUE



Available September 2018

44900-5915 - BLUE-RED
PLUS YOUTH SIZE



Available September 2018

NEW ERA - BUTTON
44900-5916 - BLUE



Available September 2018

44900-5916 - BLACK



Available September 2018

NEW ERA - LOGO BEANIE
44900-5917 - GREY



Available September 2018

44900-5917 - RED



Available September 2018

WOMEN

UNISEX

NEW ERA CAPS



DUOTONE TRUE KITEBOARDING

PHOTOS: TOBY BROMWICH
DESIGN: 3DELUXE

ALL DATA SUBJECT TO CHANGE
©DUOTONE KITEBOARDING 2018
WWW.DUOTONEKITEBOARDING.COM

FOLLOW US ON   

 **Climate neutral**
Print product
ClimatePartner.com/11666-1806-1002

